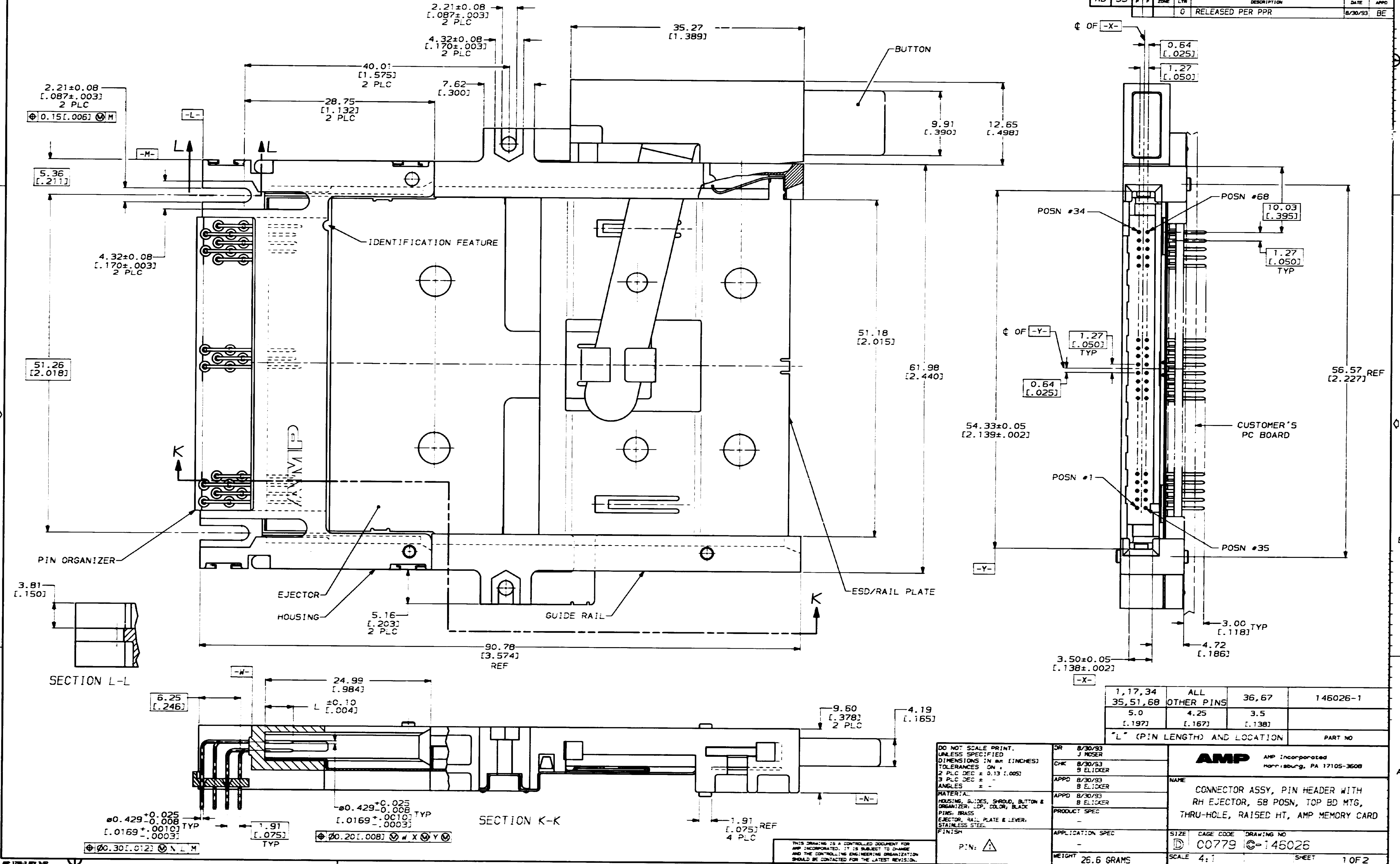


THIS DRAWING IS UNPUBLISHED. RELEASED FOR PUBLICATION. COPYRIGHT 19 BY AMP INCORPORATED. ALL INTERNATIONAL RIGHTS RESERVED.

REVOLUTIONS		DATE	APPD
NO	DESCRIPTION		
0	RELEASED PER PPR	8/30/93	BE



1,17,34	ALL	36,67	146026-1
35,51,68	OTHER PINS		
5.0	4.25	3.5	
[0.197]	[0.167]	[0.138]	
"L" (PIN LENGTH) AND LOCATION			PART NO

DR	8/30/93	J MOSER
CHK	8/30/93	B ELICKER
APPD	8/30/93	B ELICKER
APPD	8/30/93	B ELICKER
PRODUCT SPEC		
APPLICATION SPEC		
WEIGHT	25.6 GRAMS	

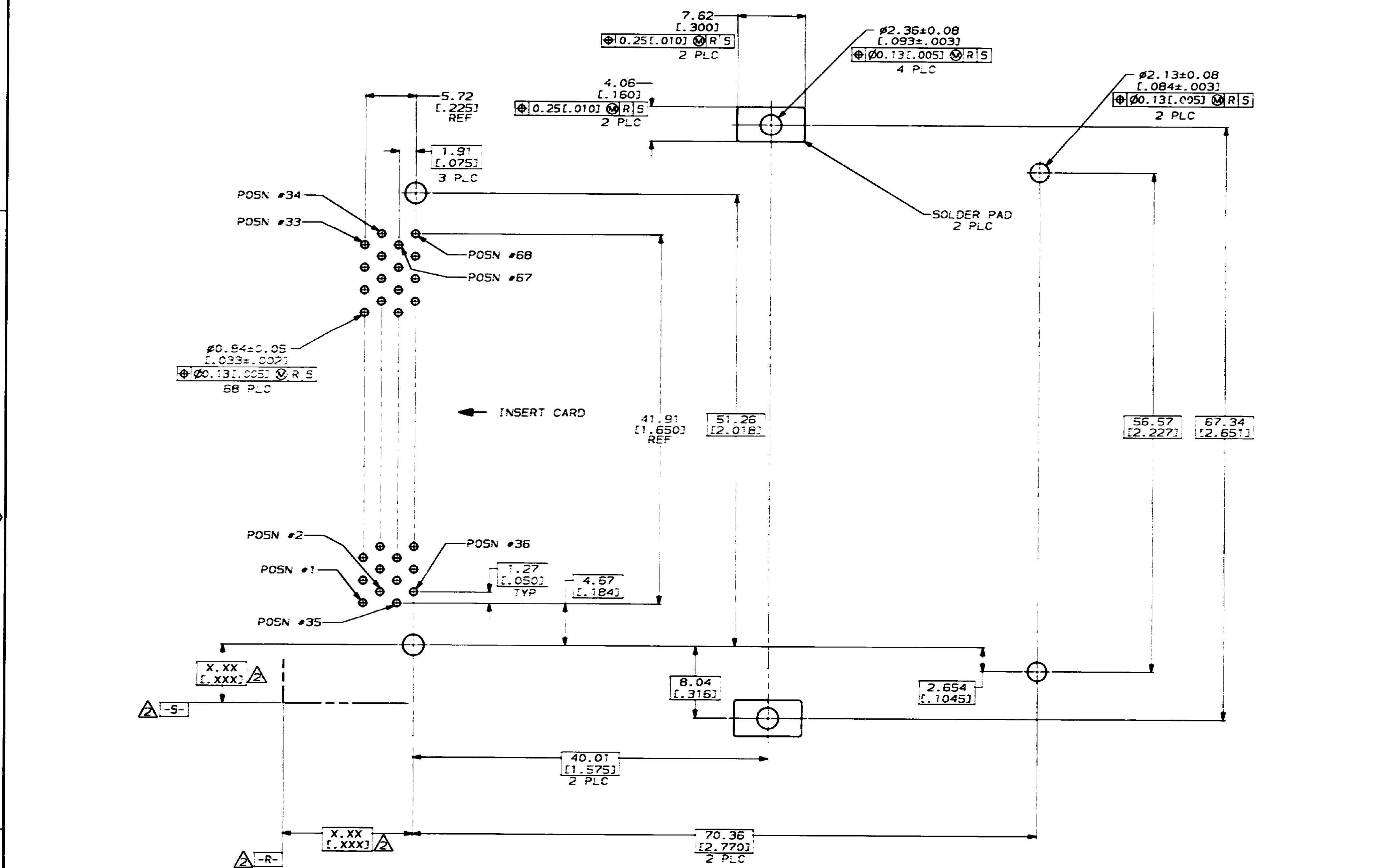
AMP AMP Incorporated Harrisburg, PA 17105-3608	
NAME CONNECTOR ASSY, PIN HEADER WITH RH EJECTOR, 58 POSN, TOP BD MTG, THRU-HOLE, RAISED HT, AMP MEMORY CARD	
SIZE	CAGE CODE DRAWING NO
D	C0779 146026
SCALE	4:1 SHEET 1 OF 2

DO NOT SCALE PRINT. UNLESS SPECIFIED DIMENSIONS IN INCHES. TOLERANCES ON: 2 PLC DEC ± 0.13 (0.005) 3 PLC DEC ± ANGLES ± MATERIAL: HOUSING, GUIDES, SPRING, BUTTON & ORGANIZER: COP. COLOR, BLACK PINS: BRASS EJECTOR, RAIL PLATE & LEVER: STAINLESS STEEL FINISH: P/N:

THIS DRAWING IS A CONTROLLED DOCUMENT FOR AMP INCORPORATED. IT IS SUBJECT TO CHANGE AND THE CONTROLLING ENGINEERING ORGANIZATION SHOULD BE CONTACTED FOR THE LATEST REVISION.

THIS DRAWING IS UNPUBLISHED. RELEASED FOR PUBLICATION. BY AMP INCORPORATED. ALL INTERNATIONAL RIGHTS RESERVED.

REV	DATE	DESCRIPTION	DATE	APPD
AD 39		SEE SHEET ONE		



- 1 0.00076 [0.00030] MINIMUM GOLD IN CONTACT AREA, 0.00381 [0.00150] MIN TIN-LEAD ON SOLDER TAILS, ALL OVER 0.00127 [0.00050] MINIMUM NICKEL
- 2 DATUMS AND BASIC DIMENSIONS ESTABLISHED BY CUSTOMER
- 3 CONNECTOR REQUIRES USE OF 4 - SIZE 2M SCREWS FOR FASTENING TO PRINTED CIRCUIT BOARD

RECOMMENDED BOARD LAYOUT

PART NO		AMP	
AMP Incorporated Harrisburg, PA 17105-3608		NAME CONNECTOR ASSY, PIN HEADER WITH RH EJECTOR, 68 POSN, TOP BOARD MTG, THRU-HOLE, RAISED HEIGHT, AMP MEMORY CARD	
DR 8/30/93 J ROSE	CHK 8/30/93 B ELICKER	APPD 8/30/93 B ELICKER	APPD 8/30/93 B ELICKER
PRODUCT SPEC		SIZE D	CASE CODE 00779
FINISH		DRAWING NO	©-146026
MATERIAL		SCALE 4:1	SHEET 20F2
WEIGHT		CUSTOMER DRAWING	

THIS DRAWING IS A CONTROLLED DOCUMENT FOR AMP INCORPORATED. IT IS SUBJECT TO CHANGE AND THE CONTROLLING ENGINEERING ORGANIZATION SHOULD BE CONTACTED FOR THE LATEST REVISION.